



Exactly What You Need

This guide is an overview of our full line of stock garments and napery products. Regent also specializes in custom uniform manufacturing. We take pride in the flexibility of our services, so if you don't see it here, just ask. Please feel free to call with any questions you may have. We look forward to meeting your needs—and exceeding your expectations. 1-800 326-2065



*Putting Quality to Work
for Four Generations*



For more than 88 years, our family has been dedicated to helping textile rental businesses like yours succeed by giving customers exactly what they want.

At Regent, we're focused on making it easy for you to say "yes." This includes our full line of standard uniforms and napery; nearly limitless made-to-order and customization services; and strategic supply chain and national distribution network.

To serve you best, we recently added industrial garments and napery to our offerings. We've also enhanced our distribution system, for even more rapid response.

When you choose Regent, you get more than durable, well-priced textile products: You get exactly what you need, when and where you need it. You're assured of hands-on owner management and control of production. And you'll experience a level of quality and service that can only come from four generations of commitment. Above all, when you partner with Regent, you get satisfied customers.

It is our pleasure to serve you and continue our tradition of saying "yes."

Best regards,


John N. Miller


Gregory H. Miller




Made to Order

A Million Ways to Look Good

Our short lead times, low minimums, and style variations are unmatched.

Whatever you may need, rest assured we can make it. Our knowledgeable design service staff will work with you to customize garments to your customers' specifications. You don't have to wait long for results: We can create samples in just a few days.

Start with technologically advanced fabrics in your choice of color, weight, and content. Customization can include garment sleeve length, cuff styles, body length, collar and front closure, contrasting trim, and pocket variations. The options are nearly limitless—and low minimum requirements let you order as few as six pieces per size.

The flexibility of our made-to-order capabilities is matched only by the quality of our garment details. If you don't see what you want here, give us a call. We love a challenge. 

Custom Uniforms

- Aprons
- Chef Apparel
- Chef Hats
- Food Processing
- Food Service
- Hospitality
- Industrial Coveralls
- Industrial Pants
- Industrial Shirts
- Jackets
- Jumpsuits
- Lab Coats
- Ladies' Industrial
- Ladies' Work Shirts
- Ladies' Smocks
- Lapel Coats
- Light Industrial
- Meat Frocks
- Meat Wraps
- Multi-Service Uniforms
- Pharmaceutical
- Shorts
- Skull Caps
- Tote Bags
- Tunics
- Unisex Garments
- Wrap Smocks

We also offer custom napery!

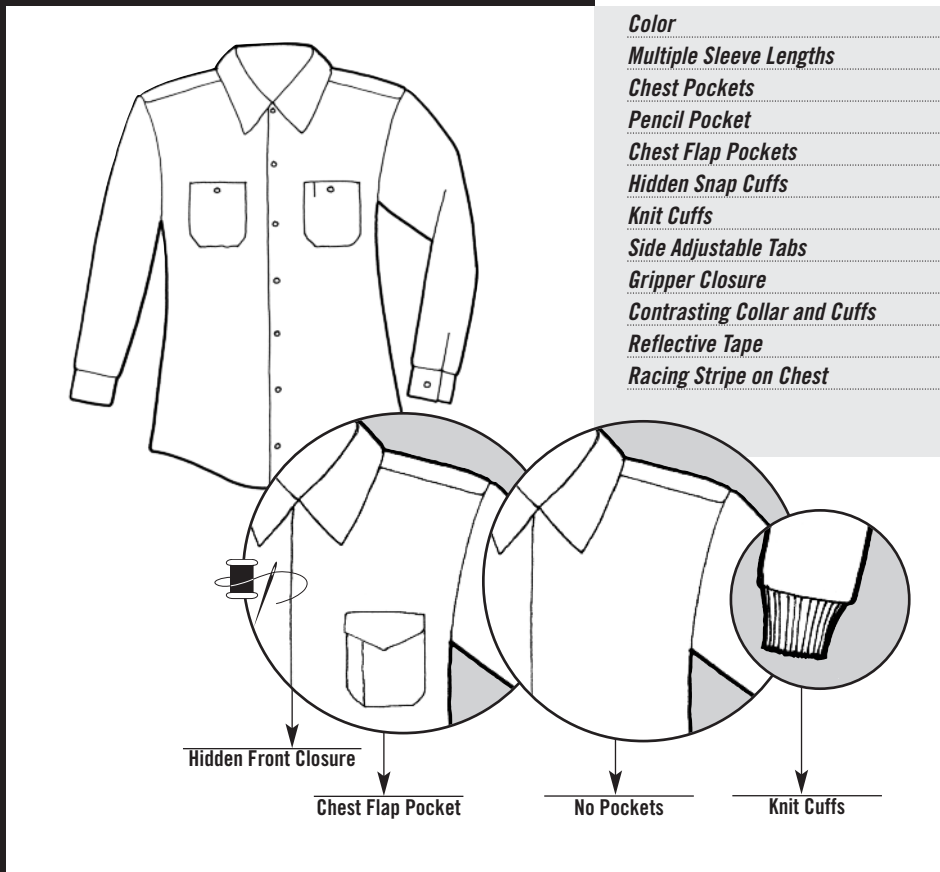


Change the Look

Industrial Shirt *see page 8 for standard shirt listings*

Popular Variations:

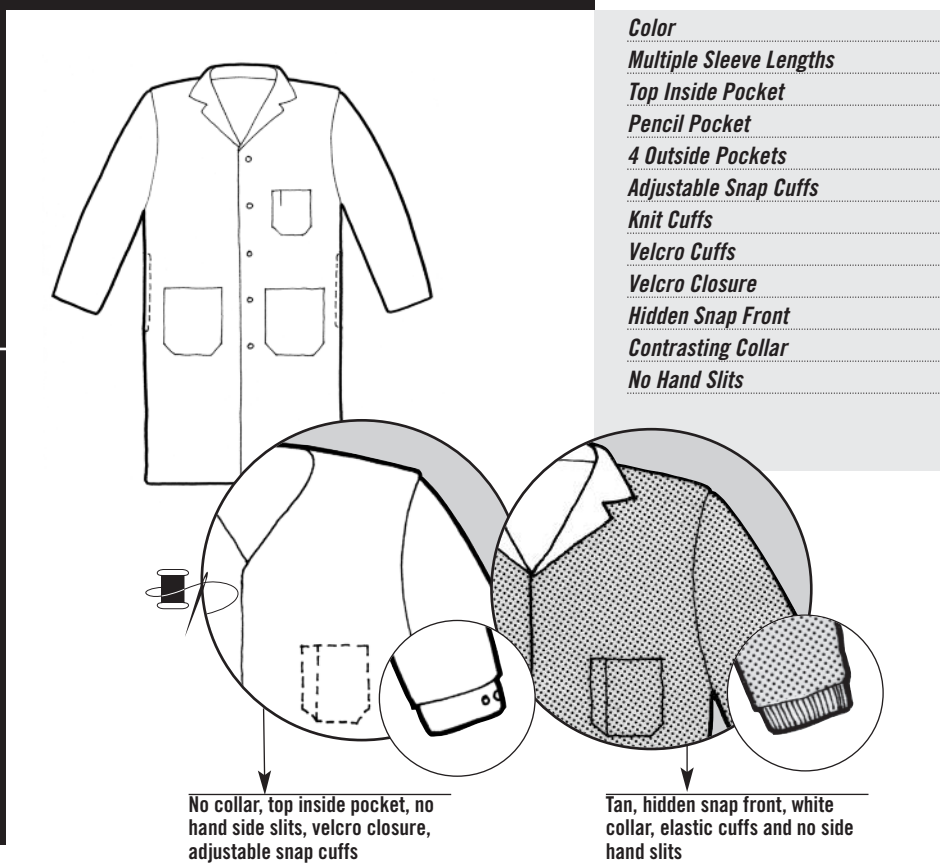
- Color
- Multiple Sleeve Lengths
- Chest Pockets
- Pencil Pocket
- Chest Flap Pockets
- Hidden Snap Cuffs
- Knit Cuffs
- Side Adjustable Tabs
- Gripper Closure
- Contrasting Collar and Cuffs
- Reflective Tape
- Racing Stripe on Chest



Lab Coat *see page 16 for standard lab coat listings*

Popular Variations:

- Color
- Multiple Sleeve Lengths
- Top Inside Pocket
- Pencil Pocket
- 4 Outside Pockets
- Adjustable Snap Cuffs
- Knit Cuffs
- Velcro Cuffs
- Velcro Closure
- Hidden Snap Front
- Contrasting Collar
- No Hand Slits

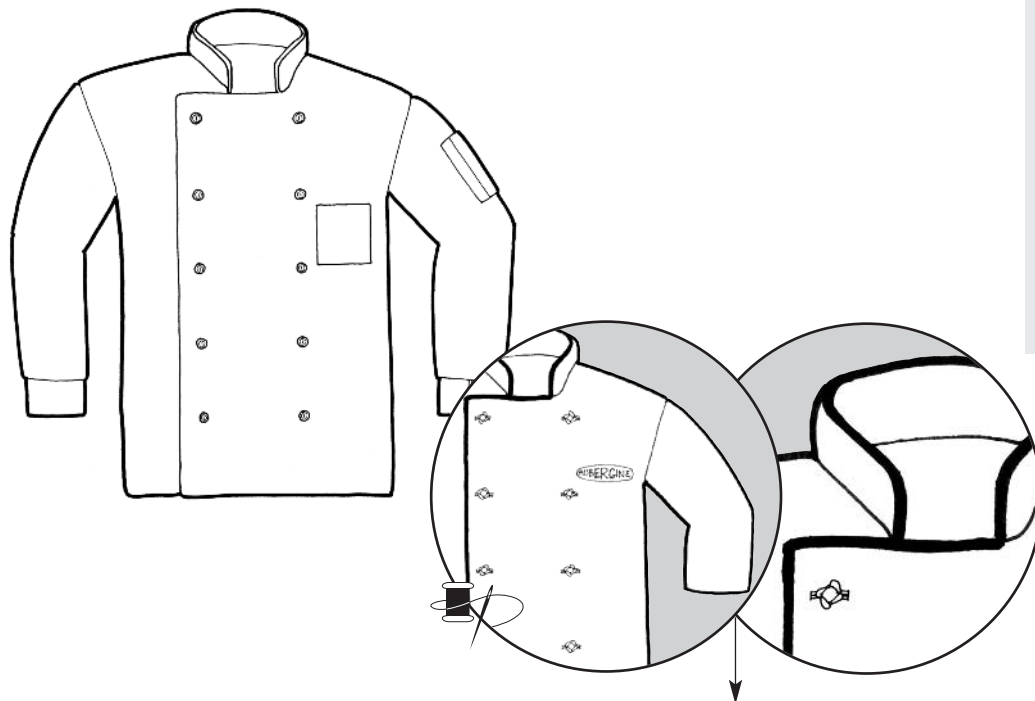


Unlimited Choices

Chef Coat *see page 15 for standard chef coat listings*

Popular Variations:

- Color*
- Multiple Sleeve Lengths*
- Chest Pockets*
- Pencil Pocket*
- Plastic Buttons*
- Cloth Knots*
- Colored Piping*
- Embroidered logos*
- Contrasting Trim*



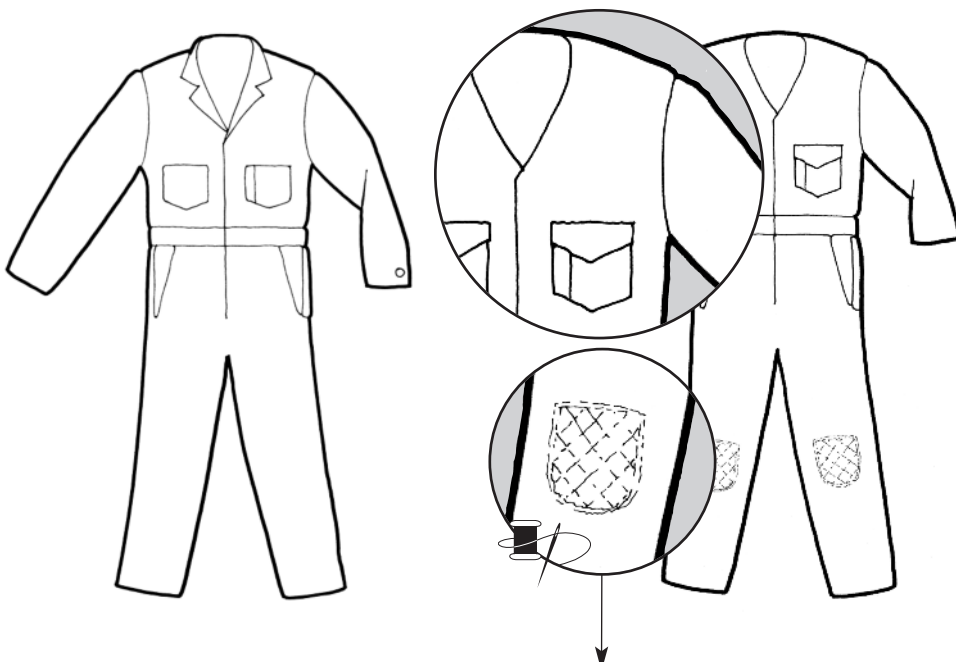
Logo
Embroidery
Available

Logo embroidery, black piping on collar, 3/4 sleeves, no pockets

Coverall *see page 10 for standard coverall listings*

Popular Variations:

- Color*
- Multiple Sleeve Lengths*
- Detachable Hood*
- Adjustable Snap Cuffs*
- Velcro Closure*
- Gripper Closure*
- Zipper Closure*
- Button Closure*
- Chest Flap Pockets*
- With or Without Collar*
- Reflective Tape*

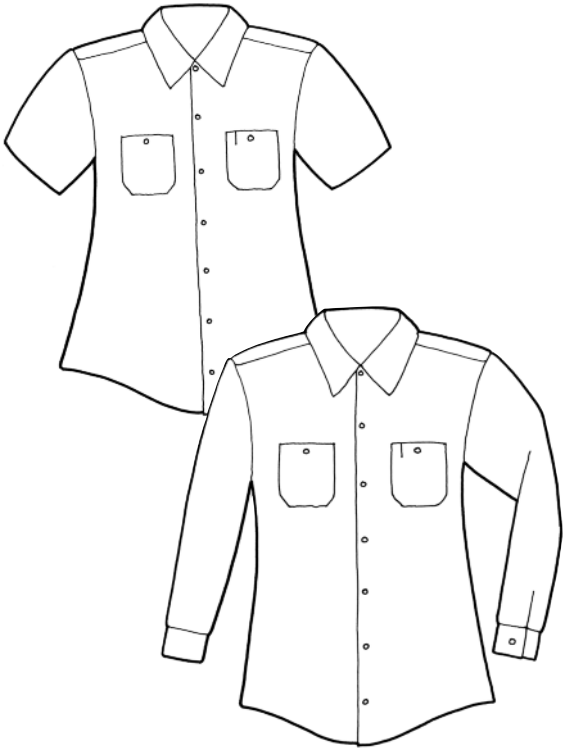


Jumpsuits
also
Available

Velcro closure, knee padding pockets, flap pockets on chest, no collar

Industrial Shirts

Industrial Shirt



Style Number	Color
--------------	-------

Short Sleeve

2552E	Red
2553E	Grey
2554E	Postman Blue
2555E	Light Grey
2559E	White
2564E	Navy
2568E	Spruce Green
2574E	Light Blue
2575E	Light Tan
2578E	Lagoon Green

*Short Sleeve Poly/Cotton Blend with Six Button Front and Top Snap
Stock in Sizes S-5XL*

Long Sleeve

2552	Red
2553	Grey
2554	Postman Blue
2555	Light Grey
2559	White
2564	Navy
2568	Spruce Green
2574	Light Blue
2575	Light Tan
2578	Lagoon Green

*Long Sleeve Poly/Cotton Blend with Six Button Front and Top Snap
Stock in Sizes S-5XL
LN (add 1.5" to sleeve, 2" to body) Sizes M-4XL*

Striped Industrial Shirt



Style Number	Color
--------------	-------

Short Sleeve

2503E	White/Charcoal Stripe
2509E	Grey/Blue Stripe
2512E	White/Blue Stripe

*Short Sleeve Striped Poly/Cotton Blend with Six Button Front and Top Snap
Stock in Sizes S-5XL*

Long Sleeve

2503	White/Charcoal Stripe
2509	Grey/Blue Stripe
2512	White/Blue Stripe

*Long Sleeve Striped Poly/Cotton Blend with Six Button Front and Top Snap
Stock in Sizes S-5XL
LN (add 1.5" to sleeve, 2" to body) Sizes M-4XL*

Industrial Shirts

Micro-Check Industrial Shirt



Style Number	Color
--------------	-------

Short Sleeve

2521E	Navy/Black Check
-------	------------------

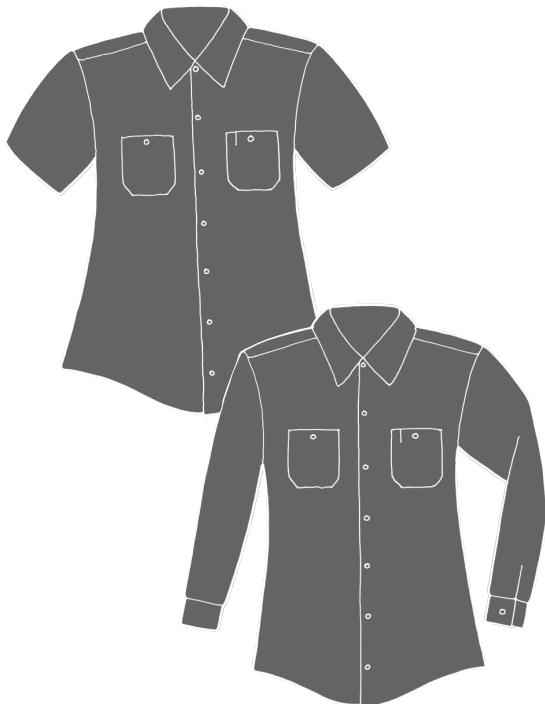
*Short Sleeve Micro-Check Poly/Cotton Blend with Six Button Front and Top Snap
Stock in Sizes S-5XL*

Long Sleeve

2521	Navy/Black Check
------	------------------

*Long Sleeve Micro-Check Poly/Cotton Blend with Six Button Front and Top Snap
Stock in Sizes S-5XL
LN (add 1.5" to sleeve, 2" to body) Sizes M-4XL*

100% Wrinkle Resistant Cotton Shirt



Style Number	Color
--------------	-------

Short Sleeve

1564H	Navy
1574H	Light Blue
1594H	Dark Navy

*Short Sleeve 100% Wrinkle Resistant Cotton with Six Button Front and Top Snap
Stock in Sizes S-5XL*

Long Sleeve

1564W	Navy
1574W	Light Blue
1594W	Dark Navy

*Long Sleeve 100% Wrinkle Resistant Cotton with Six Button Front and Top Snap
Stock in Sizes S-5XL
LN (add 1.5" to sleeve, 2" to body) Sizes M-4XL*

Industrial Pants

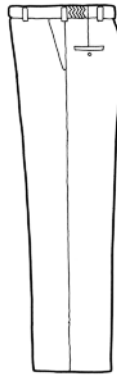
Basic-Cut Pant



Style Number	Color
2656	Khaki
2663	Charcoal Grey
2664	Navy
2668	Spruce Green
2675	Chocolate Brown
2680	Black

*Basic Cut Poly/Cotton with Button Closure
Stock in Even Sizes 28-60; Open or Finished Bottom*

Easy Fit Pant



Style Number	Color
6663	Charcoal Grey
6664	Navy
6668	Spruce Green
6675	Chocolate Brown
6680	Black

*Easy Fit Poly/Cotton Blend with Button Closure and
Side Elastic Waist
Stock in Even Sizes 28-60; Open or Finished Bottom*

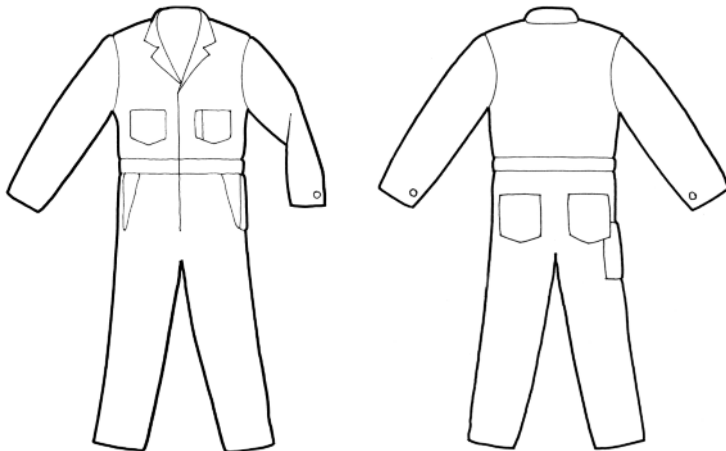
Basic Cut Pant - Wrinkle Resistant



Style Number	Color
1664W	Navy
1694W	Dark Navy

*100% Wrinkle Resistant Cotton Pant with Button Closure
Stock in Even Sizes 28-60; Open or Finished Bottom*

Coveralls



Style Number	Color
2154	Postman Blue
2156	Tan
2163	Charcoal Grey
2164	Navy
2168	Spruce Green

*Poly/Cotton Long Sleeve Coverall with zipper closure
Stock in Sizes 34-60
LN Sizes 50-60*

Style Number	Color
1151B	Orange
1154B	Postman Blue
1164B	Navy

*100% Cotton Long Sleeve Coverall with button closure
Stock in Sizes 34-60
LN Sizes 50-60*

Industrial Jackets

Team Jacket



Style Number

Color

5364

Navy Team Jacket

Stock in Regular Sizes S-5XL

Ike Jacket with Slash Pockets



Style Number

Color

2363

Charcoal Grey

2364

Navy

Stock in Regular Sizes S-5XL

Surcoat



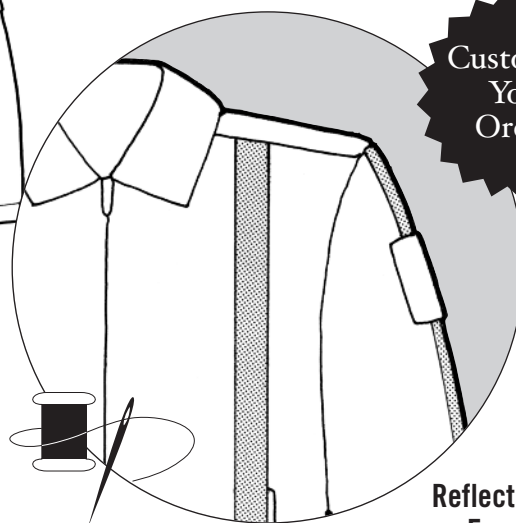
Style Number

Color

3364

Navy

Stock in Regular Sizes S-5XL



**Customize
Your
Order!**

**Reflective Safety Tape
on Front Chest Panels
and Sleeves**

See pages 2-5
for more details.



Hospitality

Cook Shirts

Black & White Cook Shirts



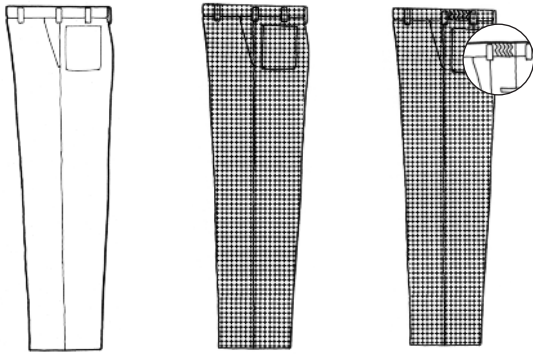
Style Number	Description
--------------	-------------

139SN-SPUN	White 100% Spun Polyester with Snaps
139SN	White 80/20 with Snaps
139SN-BK SPUN	Black 100% Spun Polyester with Snaps

Stock in Sizes S-5XL

Chef Pants

Standard Pant



975

975-CH Spun

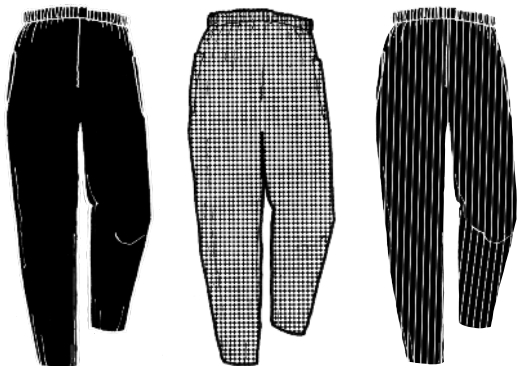
975E-CH Spun

Style Number	Description
--------------	-------------

975	White 65/35 Twill with Zipper Fly
975CH-SPUN	Black and White Check 100% Spun Polyester Twill with Zipper Fly
975E-CH SPUN	Black and White Check 100% Spun Polyester Twill with Side Elastic Waist and Zipper Fly

Stock in Sizes 28-54; Open or Finished Bottom

Baggy Pant



966BK-SPUN

966CH-SPUN

966GS-SPUN

Style Number	Description
--------------	-------------

966BK-SPUN	Black 100% Spun Polyester Twill Baggy Pant
966CH-SPUN	Black and White Check 100% Spun Polyester Twill Baggy Pant
966GS-SPUN	Gangster Stripe 100% Spun Polyester Twill Baggy Pant

Stock in Sizes S-4XL

Chef Coats

Standard & Euro Style



199P/199P-SPUN



199PF/199PF-SPUN



199P-SPUN-SS



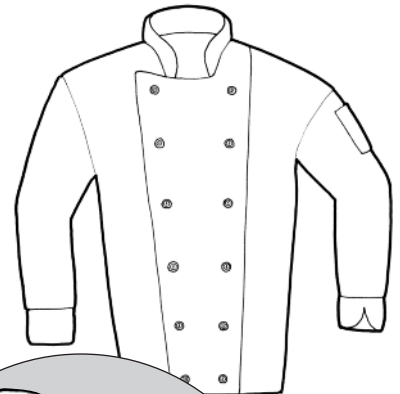
270PF-COT



199PBK-SPUN



196BK-SPUN



230 SPUN

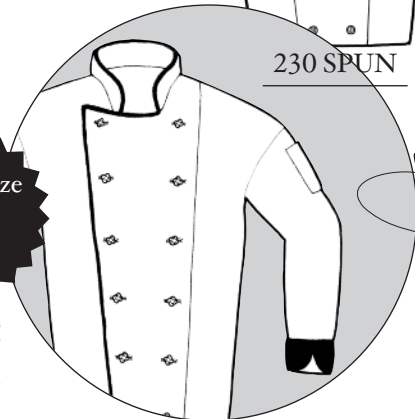
Style Number	Description
199P	White 65/35 Twill with Plastic Buttons
199PF	White 65/35 Twill with Cloth Knots
199P-SPUN	White 100% Spun Polyester Twill with Plastic Buttons
199PF-SPUN	White 100% Spun Polyester Twill with Cloth Knots
199PF-COT	White 100% Cotton with Cloth Knots
196BK-SPUN	White 100% Spun Polyester Twill with Black Trim and Black Buttons (<i>not pictured</i>)
199P-BB-SPUN	White 100% Spun Polyester Twill with Black Buttons
199PBK-SPUN	Black 100% Spun Polyester Twill with Black Buttons
270PF-COT	White 100% Cotton Euro Style with Cloth Knots
230-SPUN	White 100% Spun Polyester Twill Euro Style with Plastic Buttons
199P-SPUN-SS	White 100% Spun Polyester Twill with Short Sleeves and Plastic Buttons

***All Coats are Available with Short Sleeves*

Stock in Sizes S-5XL

Customize Your Order!

Contrast Piping and Cuffs
See pages 2-5 for more details.



Hospitality

Miscellaneous

Style Number	Description
95MC	White 65/35 Twill Military Collar Busboy Coat
554	80/20 Poplin Princess Dress (Available in Light Blue or Aqua)
715CG	White 100% Cotton Gathered Chef Hat
SCARF-WT POP	White 80/20 Poplin Scarf



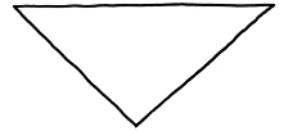
95MC



554



715CG

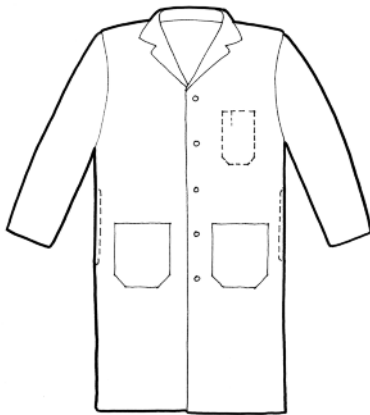


SCARF-WT POP

Lab and Lapel Coats

Lab & Counter Coats

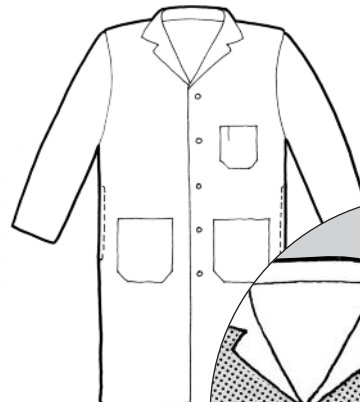
Style Number	Description
874	White 80/20 Poplin Lab Coat with Snaps, Inside Top Pocket and 2 Lower Pockets
895	White 80/20 Poplin Lab Coat with Snaps and No Pockets
925	Men's 80/20 White Poplin Lab Coat with 3 Outside Pockets
926	Men's 80/20 White Poplin Lapel Coat with 3 Outside Pockets



874



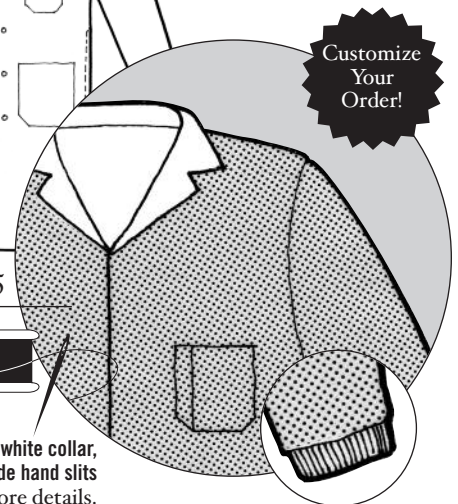
895



925



926



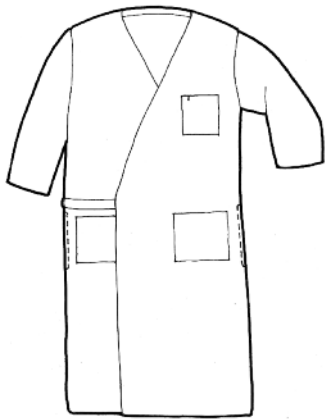
Customize Your Order!

Tan, hidden snap front, white collar, elastic cuffs and no side hand slits
See pages 2-5 for more details.

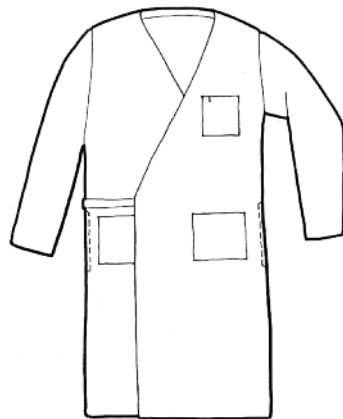
Wraps

Utility Wraps

Style Number	Description
255	White 80/20 Poplin ½ Sleeve Wrap Smock with 3 Outside Pockets
256	White 80/20 Poplin Long Sleeve Wrap Smock with 3 Outside Pockets
924	White 65/35 Twill Butcher Wrap with Shawl Collar with 3 Outside Pockets
963	80/20 Poplin ¾ Sleeve Wrap Smock with Inside Top Pocket and 2 Lower Pockets (Available in White or Navy)



255



256



924



963

Meat Frocks

Food Processing

Style Number	Description
492	White 100% Spun Polyester Plain Weave with Inside Top Pocket and 2 Lower Pockets
494	White 100% Spun Polyester Plain Weave with Inside Top Pocket
495	White 100% Spun Polyester Plain Weave with 3 Outside Pockets



492



494



495