



Quality, Reliability and Value. Delivered.

# Product Guide

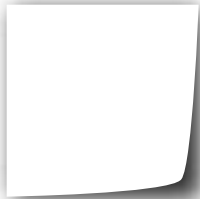
[www.BestTextiles.com](http://www.BestTextiles.com)

1-800-241-5060

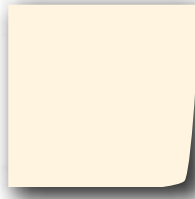


# BEST Table Linen Colors

## Signature Fabric by Milliken™



White



Champagne



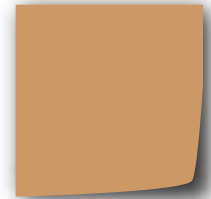
Beige



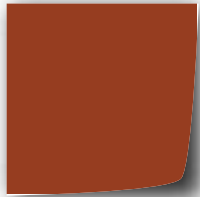
Bermuda Sand



Maize



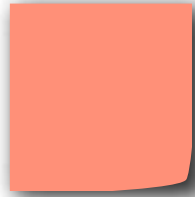
Sandalwood



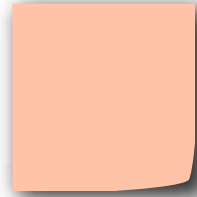
Rust



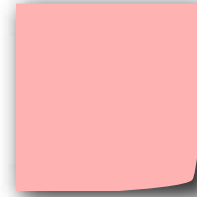
Red



Peach



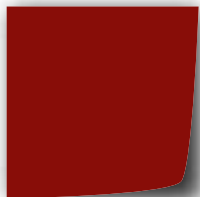
Soft Peach



Pink



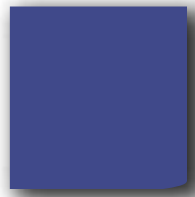
Dusty Rose



Burgundy



Purple



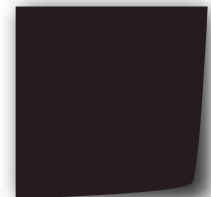
Cadet Blue



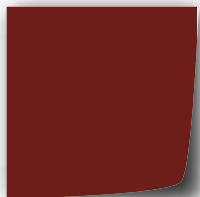
Medium Blue



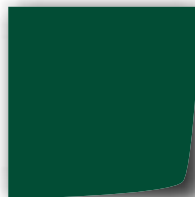
Navy



Chocolate Brown



Dk Burgundy



Dk Forest Green



Forest Green



Seafoam



Teal



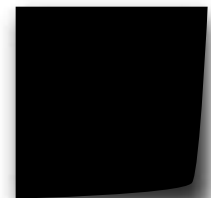
Gold

**Horizon seamless rounds up to 132"**: available in White, Champagne, Black, Sandalwood, Burgundy

**Lattice placemats**: available as special order

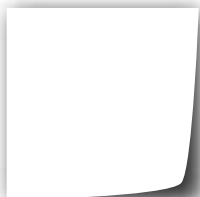


Dusty Grey



Black

## Centura™ by BEST



White



Gold



Champagne



Sandalwood



Forest Green



Burgundy

**Centura fabrics**: dyed to match Signature

**Cotton napkins**: available in White



Red



Black



1-800-241-5060 BestTextiles.com



Best is one of the country's largest manufacturer and distributor of quality linen supply apparel and institutional textiles. Most items in this Product Guide are in stock and available to ship from one of our regional Distribution Centers within 24 - 48 hours of receiving your purchase order.

**Contact Us: 1-800-241-5060**  
**Customer Service**  
**P.O. Box 259**  
**1210 Greenbelt Drive**  
**Griffin, GA 30224**

#### Distribution Centers

150 Maple Street  
 Stoughton, MA 02072

340 South Stiles Street  
 Linden, NJ 07036

3504 East Crosstimbers Road  
 Houston, TX 77093

125 Martha Street  
 Danville, VA 24541

14421 Bonelli Street  
 City of Industry, CA 91746

#### Return Policy:

All sales are final. Only merchandise with fabric or manufacturing defects, or products that were shipped in error may be returned for a full refund, including all freight. Those returns which are approved as a customer accommodation are subject to a 25% re-stocking fee and customer pays all freight.

All returned merchandise must be in sellable condition, unwashed and unmarked, with no label tape or tape residue on the merchandise.

Please call our customer service department at 1-800-241-5060 for a Return Authorization (RA) number. Goods returned without an approved RA number marked clearly on the outside of each carton will not be accepted.

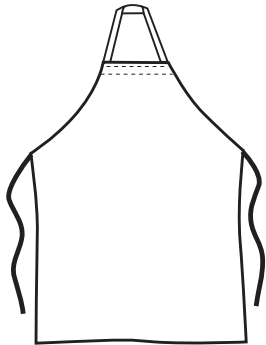
Returns must be made within 30 days of original invoice date. No returns will be accepted after this time.

	Page
<b>Apparel &amp; Apron Color Chart</b> .....	inside front cover
<b>Contact Us, Policies and Sizing information</b> .....	1-2
<b>Aprons</b> .....	3-4
<b>Chef &amp; Kitchen Apparel</b>	
Cook Shirts .....	5
Chef Coats .....	5-7
Waiter & Busboy Coats .....	7
Neckerchiefs & Hats .....	7
Pants .....	8
<b>Frocks, Wraps &amp; Butcher Gowns</b>	
Butcher Apparel .....	9-10
Produce Wraps/California Gown .....	11
Lapel Coats .....	12
Smocks .....	12
<b>Healthcare</b>	
Lab Coats .....	13-15
Surgeon's Gown .....	15
Isolation Gown .....	15
Scrubs .....	16
Warm Up Jacket .....	16
Patient Gowns .....	16-18
Exam Gowns .....	18
Mammography Cape .....	18
Pajama Pants .....	19
Adult Bibs .....	19
Pediatric Patient Apparel .....	19
<b>Flat Goods</b>	
Terry Towels .....	20
OR Towels, Bar Mops, Huck & Herringbone Towel .....	21
Sheets & Pillowcases ( <i>woven &amp; knitted</i> ) .....	22
Blankets .....	23
Diapers, Incontinent Pads & Pillows .....	24
<b>Napery</b>	
Table Linen .....	25-26
Placemats .....	26
Table Skirting .....	26
<b>Cross Reference Chart</b> ( <i>style numbers &amp; item numbers</i> ) ..	27-30
<b>Table Linen Color Chart</b> .....	inside back cover





## BIB APRON — NO POCKETS



### Heavy weight 7.2oz spun bib apron

Straight arm hole, reinforced w/bar tack at strings. 40" tubular ties to match. 29"W x 34"L cut size

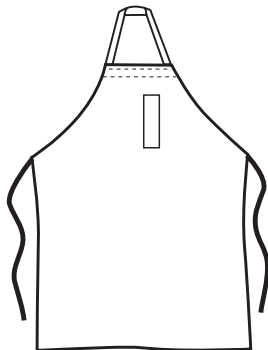
BEST STYLE	COLOR	ITEM #	FABRIC
A312I590	White 10	406035	100% Spun Poly
	Black 01	406034	
	Forest Green 31B	406040	
	Navy 41	406043	
	Kelly Green 33A	406042	
	Royal 42	406044	
	Burgundy 61C	406047	
	Red 60A	406046	

### Large cut heavy weight 7.2oz spun bib apron w/tubular ties

Straight arm hole, reinforced w/bar tack at strings. 40" tubular ties. Cut Size: 31"W x 36" L

A335T591	White 10	406152	100% Spun Poly
----------	----------	--------	----------------

## BIB APRON - PENCIL POCKETS

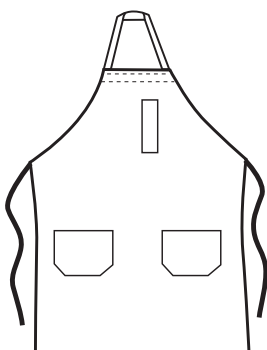


### Heavy weight 7.2oz spun pencil pocket bib apron

2 1/4" x 6" pencil pocket upper left chest, straight arm hole, reinforced w/bar tack at strings. 40" tubular ties to match. 29"W x 34"L cut size

BEST STYLE	COLOR	ITEM #	FABRIC
A322I590	White 10	406122	100% Spun Poly
A321I590	Black 01	406097	
	Forest Green 31B	406099	
	Red 60A	406104	

## BIB APRON - 3 POCKETS



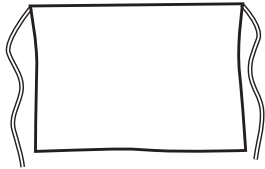
### Heavy weight 7.2oz spun three pocket bib apron

Straight arm hole. 40" tubular ties to match. One top pencil pocket and two bottom pockets. 29"W x 34"L cut size

BEST STYLE	COLOR	ITEM #	FABRIC
A233I590	White 10	405984	100% Spun Poly
	Black 01	405983	
	Forest Green 31B	405986	
	Navy 41	405988	
	Kelly Green 33A	405987	
	Royal 42	405989	
	Burgundy 61C	405992	
	Red 60A	405991	
	Brown 20	405985	

# APRONS

## 4 - Way Apron

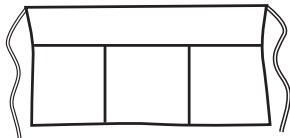


### Heavy weight 7.2oz Spun 4-way apron

Reinforced w/bar tack at strings. 40" tubular ties. 29"W x 34"L cut size

BEST STYLE	COLOR	ITEM #	FABRIC
A034I590	White 10	405947	100% Spun Poly

## CHANGE APRON

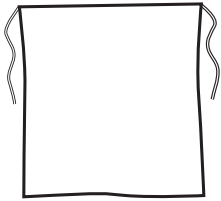


### Blended Twill change apron

Waist style change apron with three pockets. 36" self ties. 23"W x 11"L cut size

BEST STYLE	COLOR	ITEM #	FABRIC
A071S201	Black 01	405965	65% Poly/ 35% Cotton Twill

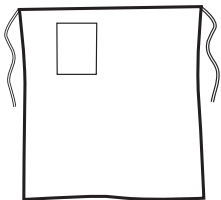
## BAR AND WAIST APRONS



### Heavy weight 7.2oz Spun bar apron

Reinforced w/bar tack at strings. 40" tubular ties. 29"W x 34"L cut size

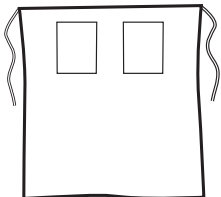
BEST STYLE	COLOR	ITEM #	FABRIC
A320I590	White 10	406077	100% Spun Poly



### Heavy weight 7.2oz Spun bistro apron with pocket

One 8" x 8" pocket with pencil stitch on right side of pocket, reinforced bar tack at strings. 40" tubular ties to match. 30"W x 34"L cut size

BEST STYLE	COLOR	ITEM #	FABRIC
A325T596	White 10 Black 01	406141 406140	100% Spun Poly

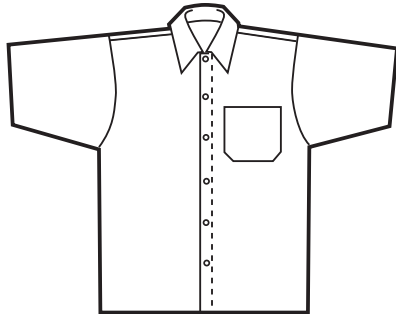


### Heavy weight 7.2oz Spun bistro apron with two pockets

Two pockets, full cut, heavyweight, durable and long-lasting. Reinforced with bar tack at strings. 40" tubular ties to match. 33"W x 36"L cut size

BEST STYLE	COLOR	ITEM #	FABRIC
A020T592	White 10 Black 01	405889 405888	100% Spun Poly

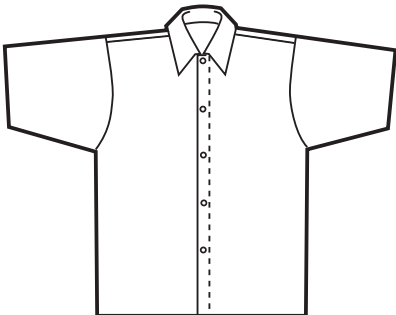
## KITCHEN & COOK SHIRTS



### 4.25oz 80/20 Poplin shirt, longer length

Cook shirt with 2" longer body. Full cut convertible collar. Bar tacked at stress points. Six snap front closure. One top left pocket. Sizes: S-5XL.

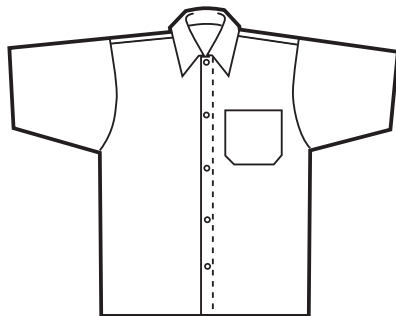
BEST STYLE	COLOR	SIZE - ITEM #	FABRIC
33133770	White 10	S 402373	80% Poly/ 20% Cotton Poplin
		M 402372	
		L 402371	
		XL 402374	
		2XL 402368	
		3XL 402369	
		4XL 402370	
		5XL 409672	



### 4.25oz 65/35 Poplin shirt, no pockets

Short sleeve. No pockets. Six snap front closure. Single needle one piece collar. Sizes: S-5XL.

BEST STYLE	COLOR	SIZE - ITEM #	FABRIC
33220830	White 10	S 402514	65% Poly/ 35% Cotton Poplin
		M 402513	
		L 402512	
		XL 402515	
		2XL 402507	
		3XL 402508	
		4XL 402509	
		5XL 402510	

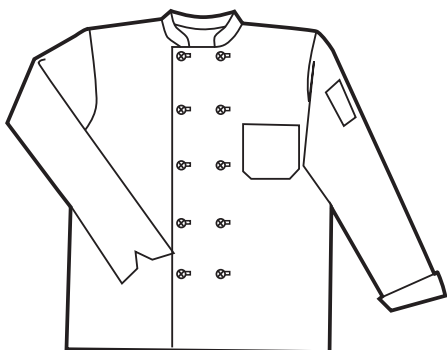


### Spun shirt with one top pocket

Kitchen shirt. Short sleeve. Full cut convertible collar. Five snap front closure. One top left breast pocket. Sizes: S-5XL.

BEST STYLE	COLOR	SIZE - ITEM #	FABRIC
33130750	White 10	S 402297	100% Spun Poly
		M 402296	
		L 402295	
		XL 402298	
		2XL 402290	
		3XL 402291	
		4XL 402292	
		5XL 402293	

## CHEF COATS



### Blended Twill, knot button coat

Double breasted chef coat. Ten Poly knot button closure. Extra wide roll up sleeve with clean finish vented cuff. One top left breast pocket. One thermometer pocket on left sleeve. Sizes: 32-64. See size grid on page 27.

BEST STYLE	COLOR	FABRIC
11240207	White 10	65% Poly/ 35% Cotton Twill

# CHEF & KITCHEN

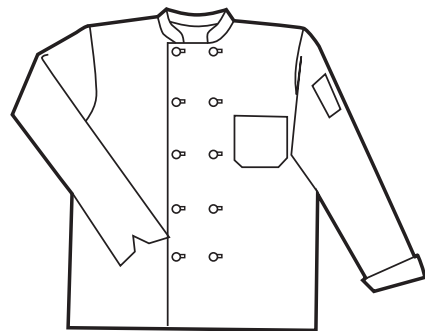
## CHEF COATS — CONTINUED



### Cotton Twill coat with knot buttons

Double breasted chef coat. Ten knot button closure. Extra wide, roll up sleeve with clean finish vented cuff. One thermometer pocket on left sleeve. Sizes: 32-64. See size grid on page 27.

BEST STYLE	COLOR	FABRIC
11240327	White 10	100% Cotton Twill



### Blended Twill coat with plastic buttons

Double breasted chef coat. Ten plastic button closure. Extra wide roll up long sleeve with clean finish vented cuff. One top left breast pocket. One thermometer pocket on left sleeve. Extra stable collar. Sizes: 32-64. See size grid on page 27.

BEST STYLE	COLORS	FABRIC
11240200	White 10 Black 01	65% Poly/ 35% Cotton Twill



### Heavy weight 7.2oz Spun coat with ten plastic buttons

Double breasted chef coat. Ten plastic button closure. Extra wide roll up long sleeve with clean finish vented cuff. One top left breast pocket. One thermometer pocket on left sleeve. Extra stable collar. Sizes: S-5XL.

BEST STYLE	COLOR	SIZE - ITEM #	FABRIC
11330590	White 10	S 401255 M 401254 L 401253 XL 401256 2XL 401248 3XL 401249 4XL 401250 5XL 401251	100% Spun Poly

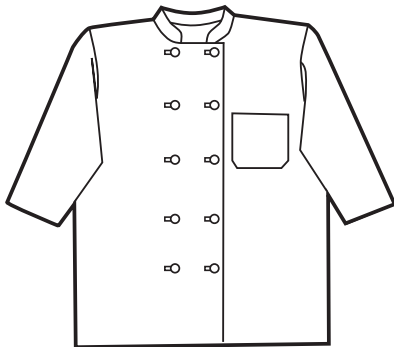


### Heavy weight 7.2oz Spun coat with ten knot button closure

Double breasted chef coat. Ten Poly knot button, reversible closure. Extra wide, roll up long sleeve with clean finish vented cuff. One top left breast pocket. One thermometer pocket on left sleeve. Extra stable collar. Sizes: S-5XL.

BEST STYLE	COLOR	SIZE - ITEM #	FABRIC
11330597	White 10	S 401266 M 401265 L 401264 XL 401267 2XL 401258 3XL 401260 4XL 401261 5XL 401262	100% Spun Poly

## CHEF COATS — CONTINUED

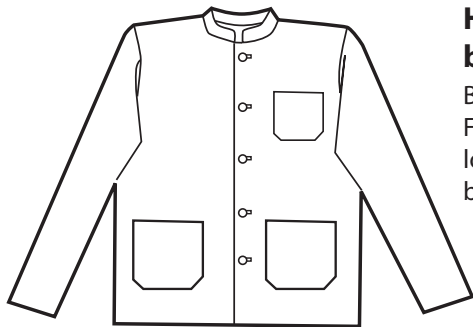


### Blended Twill coat with elbow length sleeve

Double breasted chef coat. Ten knot button closure. Hemmed elbow length sleeves. One top pocket. Extra stable collar. Sizes: 28-66. See size grid on page 27.

BEST STYLE	COLOR	FABRIC
11740200	White 10	65% Poly/ 35% Cotton Twill

## BUSBOY & WAITER JACKETS



### Heavy weight 7.2oz Spun busboy coat

Busboy coat with stand up collar. Five button front closure with long sleeves. One top and two bottom pockets. Sizes: S-5XL.

BEST STYLE	COLOR	SIZE - ITEM #	FABRIC
11250590	White 10	S 401144 M 401143 L 401142 XL 401145 2XL 401138 3XL 401139 4XL 401140 5XL 401141	100% Spun Poly

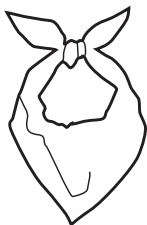


### Heavy weight 7.2oz Spun waiter's jacket

Shawl collar waiter's Eton jacket with eyelets for link closure and roomy inside pockets. Long sleeve. Link button not included. Sizes: 32-64. See size grid on page 27.

BEST STYLE	COLOR	FABRIC
11410590	White 10	100% Spun Poly

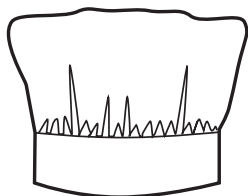
## ACCESSORIES



### 65/35 Neckerchief

Triangular neckerchief, 41" x 28 3/4" x 28 3/4", hemmed on all sides. One size fits all

BEST STYLE	COLOR	ITEM #	FABRIC
90010830	White 10	404721	65% Poly/ 35% Cotton Twill
	Black 01	404720	



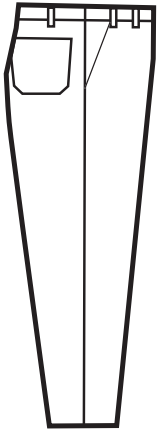
### Blended twill, 9" crown Chef Hat

9" crown, adjustable Velcro closure. One size fits all

BEST STYLE	COLOR	ITEM #	FABRIC
10900200	White 10	400001	65% Poly/ 35% Cotton Twill
	Black 01	400000	

## CHEF & COOK PANTS — TAILORED

BEST STYLE	COLOR	FABRIC
44255200	White 10	65% Poly/ 35% Cotton



### Blended Twill pants with zipper closure

Two front swing pockets and two back patch pockets. Zipper closure with snap at top of zipper waistband. Bar tacked at stress points. Waist sizes: 28 - 60. Lengths: 30, 32 & open bottom. See size grid on page 27.

BEST STYLE	COLOR	FABRIC
44250200	White 10	65% Poly/ 35% Cotton

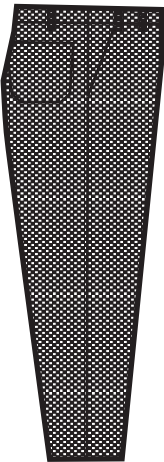
### Blended Twill pants with snap closure

Two front swing pockets and two back patch pockets. Bar tacked at stress points. Concealed snap fly closure. Waist sizes: 28 - 60. Lengths: 30, 32 & open bottom. See size grid on page 27.

BEST STYLE	COLOR	FABRIC
44320940	Black & White 09	100% Spun poly

### 100% Spun pants, yarn dyed with snap closure

Woven yarn dyed pants with two front swing pockets and two back patch pockets. Bar tacked at stress points. Snap closure. Serged and safety-stitched construction. Waist sizes: 28 - 60. Lengths: 30, 32 & open bottom. See size grid on page 27.



BEST STYLE	COLOR	FABRIC
44325940	Black & White 09	100% Spun poly

### 100% Spun pants, yarn dyed with zipper closure

Woven yarn dyed pants with two front swing pockets and two back patch pockets. Bar tacked at stress points. Serged and safety-stitched construction. Zipper closure with snap at top of zipper waist. Waist sizes: 28 - 60. Lengths: 30, 32 & open bottom. See size grid on page 28.

BEST STYLE	COLOR	FABRIC
44550590	Black 01	100% Spun Poly

## BAGGY PANTS — ELASTIC WAIST



### 100% Spun Baggy - Solid Black

3" Elastic waist with draw cord. Two front "on seam" pockets - self bagged. One back patch pocket. Relaxed fit. Sizes: XS-5XL. See size grid on page 28.

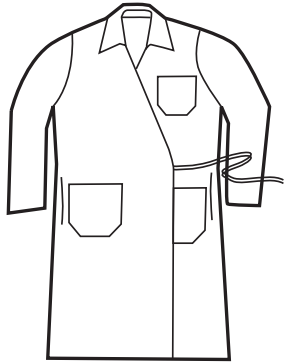
BEST STYLE	COLOR	FABRIC
44550940	Black & White 09	100% Spun Poly

### 100% Spun Baggy - Yarn Dyed Check

3" Elastic waist with draw cord. Two front "on seam" pockets - self bagged. One back patch pocket. Relaxed fit. Sizes: XS-5XL. See size grid on page 28.

# FROCKS, WRAPS & BUTCHER GOWNS

## BUTCHER APPAREL



### Heavy weight 7.2oz Spun wrap gown

Long butcher frock with collar, no lapel. One top pocket with pencil stitch and two bottom pockets. Side ties. Side vent openings for easy access to inner clothing. Extra bar tacks at stress points for added strength. Sizes: S-5XL.

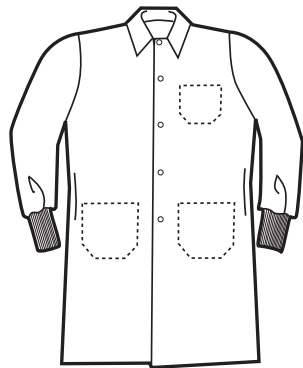
BEST STYLE	COLOR	SIZE - ITEM #	FABRIC
81120590	White 10	S 405399	100% Spun Poly
		M 405398	
		L 405397	
		XL 405400	
		2XL 405393	
		3XL 405394	
4XL 405395			
5XL 405396			



### Heavy weight 7.2oz Spun butcher coat

Short butcher coat. Five snap closure. One top and two bottom pockets. Sizes: S-5XL.

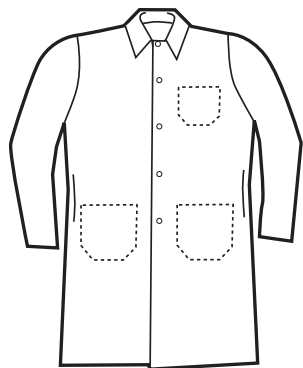
BEST STYLE	COLOR	SIZE - ITEM #	FABRIC
11040590	White 10	S 400454	100% Spun Poly
		M 400453	
		L 400052	
		XL 400055	
		2XL 400050	
		3XL 400051	
4XL 415452			
5XL 415453			



### Heavy weight 7.2oz Spun frock with knit cuffs, three inside pockets

Long butcher frock with knit cuffs. Long sleeve. One top and two bottom inside pockets. Five snap closure. Side vent openings for easy access to inner clothing. Extra bar tacks at stress points for added strength. Sizes: S-5XL.

BEST STYLE	COLOR	SIZE - ITEM #	FABRIC
11083597	White 10	S 400398	100% Spun Poly
		M 400397	
		L 400396	
		XL 400399	
		2XL 400390	
		3XL 400391	
4XL 400392			
5XL 400393			



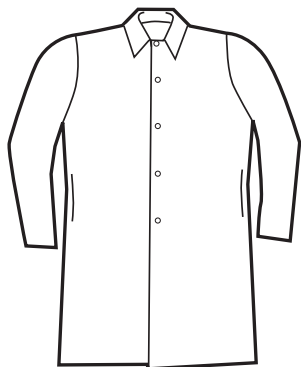
### Heavy weight 7.2oz Spun frock with three inside pockets

Long butcher frock. Long sleeve. One top & two bottom inside pockets. Five snap closure. Side vent openings for easy access to inner clothing. Extra bar tacks at stress points for added strength. Sizes: S-5XL. See size grid on page 28.

BEST STYLE	COLOR	FABRIC
11082593	White 10	100% Spun Poly
	Navy 41	
	Med Blue 45E	

# FROCKS, WRAPS & BUTCHER GOWNS

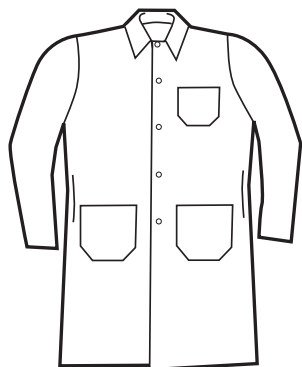
## BUTCHER APPAREL — CONTINUED



### Heavy weight 7.2oz Spun frock, no pockets

Long butcher frock. Long sleeve. No pockets. Five snap closure. Side vent openings for easy access to inner clothing. Extra bar tacks at stress points for added strength. Sizes: S-5XL.

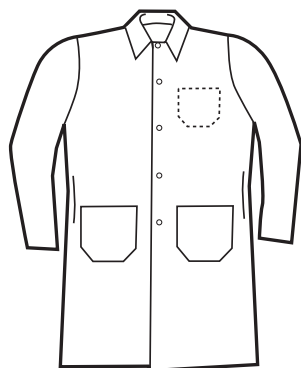
BEST STYLE	COLOR	SIZE - ITEM #	FABRIC
11082591	White 10	S 400228	100% Spun Poly
		M 400227	
		L 400226	
		XL 400229	
		2XL 400220	
		3XL 400221	
		4XL 400222	
5XL 400223			



### Heavy weight 7.2oz Spun frock with three outside pockets

Long butcher frock. Long sleeve, one top & two bottom pockets. Five snap closure. Side vent openings for easy access to inner clothing. Extra bar tacks at stress points for added strength. Sizes: S-5XL.

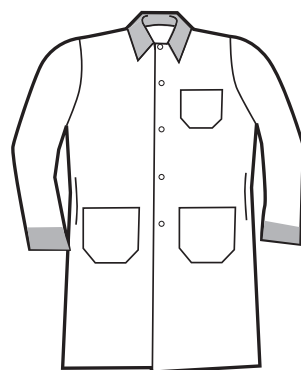
BEST STYLE	COLOR	SIZE - ITEM #	FABRIC
11080590	White 10	S 400137	100% Spun Poly
		M 400136	
		L 400135	
		XL 400138	
		2XL 400130	
		3XL 400131	
		4XL 400132	
5XL 400133			



### Heavy weight 7.2oz Spun frock, one inside and two outside pockets

Long butcher frock. Long sleeve. One inside top pocket & two bottom outside pockets. Five snap closure. Side vent openings for easy access to inner clothing. Extra bar tacks at stress points for added strength. Sizes: S-5XL.

BEST STYLE	COLOR	SIZE - ITEM #	FABRIC
11082592	White 10	S 400253	100% Spun Poly
		M 400252	
		L 400251	
		XL 400254	
		2XL 400245	
		3XL 400246	
		4XL 400247	
5XL 400248			



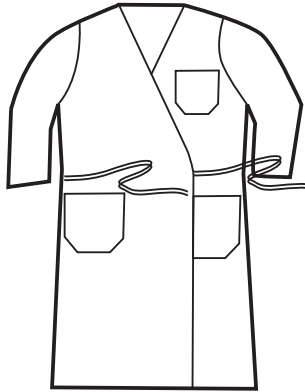
### Blended Twill frock with red trim collar/cuffs

Long butcher frock. Long sleeve, one top & two bottom pockets. Five snap closure. Side vent openings for easy access to inner clothing. Extra bar tacks at stress points for added strength. White body, red collar & cuffs. Sizes: S - 5XL

BEST STYLE	COLOR	SIZE - ITEM #	FABRIC
11880200	White 10	S 401903	65% Poly/ 35% Cotton Twill
		M 401902	
		L 401901	
		XL 401904	
		2XL 401896	
		3XL 401897	
		4XL 401898	
5XL 401899			

# FROCKS, WRAPS & BUTCHER GOWNS

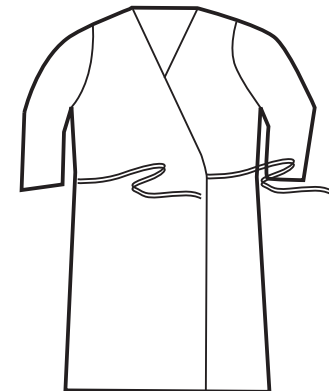
## PRODUCE WRAP GOWNS/CALIFORNIA GOWNS



### 5oz 80/20 Poplin wrap with 3/4 sleeve, 3 pockets

3/4 sleeve wrap-around. Closes left or right with self ties, side closure. One top & two bottom pockets. Extra bar tacks at stress points for added strength. Sizes: S - 5XL See size grid on page 28.

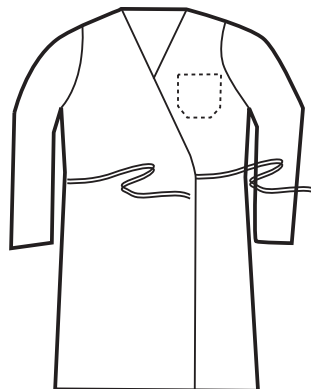
BEST STYLE	COLOR	FABRIC
81190800	White 10 Navy 41 Tan 24 Royal 42 Kelly Green 33 Light Blue 45	80% Poly/20% Cotton



### 5oz 80/20 Poplin wrap, 3/4 sleeve, no pocket

3/4 sleeves. No pocket wrap-around. Closes left or right with self ties. Extra bar tacks at stress points for added strength. Sizes: S - 5XL

BEST STYLE	COLOR	SIZE - ITEM #	FABRIC
81192800	White 10	S 405561 M 405560 L 405559 XL 405562 2XL 405553 3XL 405554 4XL 405555 5XL 405556	80% Poly/ 20% Poplin



### 5oz 80/20 Poplin wrap with long sleeves

Long sleeve wrap-around. Closes left or right with self ties, side closure. One inside top pocket. Extra bar tacks at stress points for added strength. Sizes: S - 5XL

BEST STYLE	COLOR	SIZE - ITEM #	FABRIC
81193803	White 10	S 405593 M 405592 L 405591 XL 405594 2XL 405586 3XL 405587 4XL 405588 5XL 405589	80% Poly/ 20% Cotton

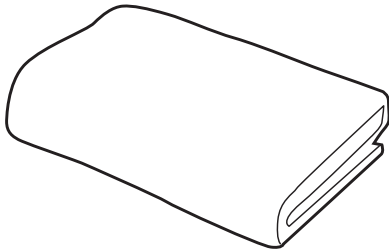
# FLAT GOODS

	ITEM #	SIZE	DESCRIPTION/COLOR	CASE PACK	FABRIC
<b>BLANKETS</b>	407264	30x40	Pink & Blue Stripes	12 dz	86/14 Blend

## Baby Receiving Blanket

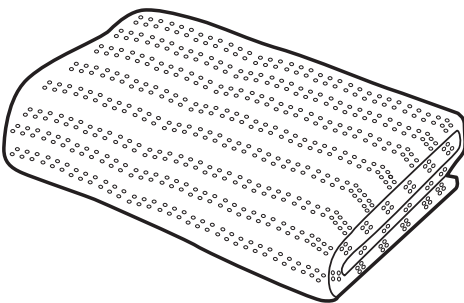


	ITEM #	SIZE	DESCRIPTION/COLOR	WEIGHT	CASE PACK	FABRIC
<b>Bath Blankets</b>	407278	70x90	Unbleached	1.40 lb	50 ea	55/45 Blend
	407274	70x90	White	1.40 lb	48 ea	88/12 Blend
	407290	70x90	Unbleached	2.00 lb	60 ea	55/45 Blend
	407284	70x90	White	1.40 lb	48 ea	88/12 Blend
	407282	70x90	Unbleached	1.40 lb	48 ea	88/12 Blend



*napped for softness, warmth and absorbency*

	ITEM #	SIZE	DESCRIPTION/COLOR	WEIGHT	CASE PACK	FABRIC
<b>Thermal Blanket</b>	407263	66x90	White	2.50 lb	12 ea	100% Cotton



	ITEM #	SIZE	DESCRIPTION/COLOR	WEIGHT	CASE PACK	FABRIC
<b>Thermal Spread Blankets</b>	407286	66x90	White	2.5lb, Checkerboard	24 ea	100% Cotton
	407283	66x94	White	2.7lb, Snag free	50 ea	73/27 Blend
	407279	74x100	White	3.5lb, Duchess	12 ea	55/45 Blend

